

Publications



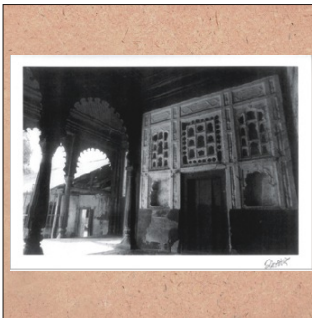
Product: **Heritage Map of Pune**
Code: **P001**



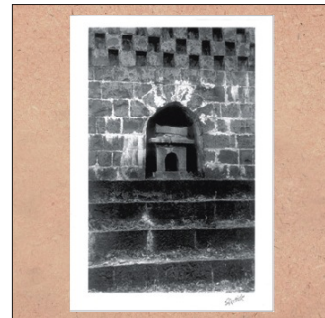
Product: **Glimpses of Pune**
Code: **P002**



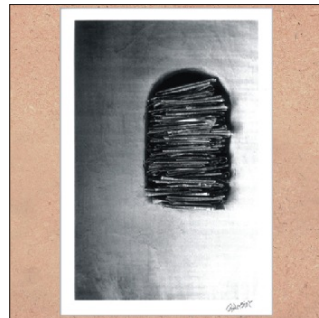
Product: **Tamasha**
Code: **P003**



Product: **Wadas of Pune - art print**
Code: **P004**



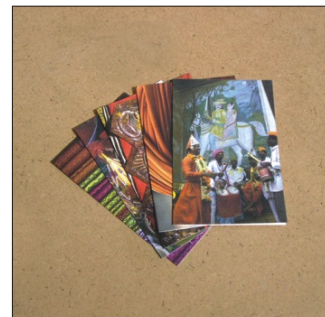
Product: **Wadas of Pune - art print**
Code: **P005**



Product: **Wadas of Pune - art print**
Code: **P006**



Product: **Our Built Heritage**
Code: **P007**



Product: **Heritage cards (set of 6)**
Code: **P008**

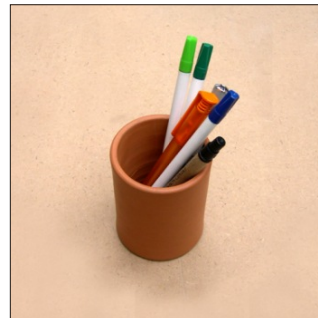
Pune city is a repository of various Maharashtrian cultural and craft activities. Many of these take place in the narrow side lanes of the city and are unknown to the vast majority of citizens. Warsaa awareness publications, pamphlets, art prints and cards provide insights about Pune's landmark buildings, Pune's environment and Pune culture.



Product: **Incense diffuser**
Code: **T001**



Product: **Musician ganpatis**
Code: **T002**



Product: **Pen holder - round**
Code: **T003**



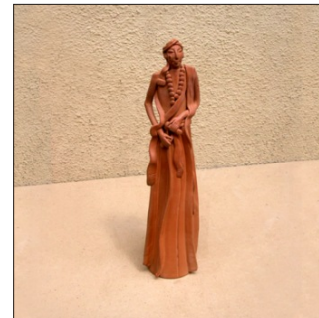
Product: **Pen holder - square**
Code: **T004**

Terracotta products

These terracotta items are developed by village communities around Pune. Warsaa assists these communities to find urban outlets. Fashioned from local clay, which is baked at temperatures above 800° C, the products showcase the rural artisans' skills that range from throwing, turning, shaping into curves, carving in relief and the ability and imagination to illustrate a variety of themes.



Product: **Ganpatis (refrigerator mounts)**
Code: **T005**



Product: **Warkari**
Code: **T006**



warsaa | the heritage shop

Buy **warsaa** products, promote the heritage of Maharashtra



Metalware - Brass and alloy cast



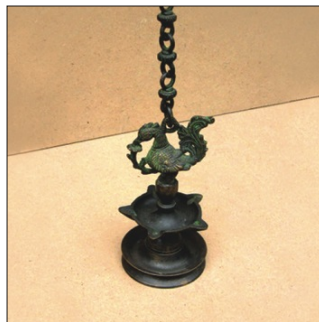
Product: **Panchpatra pen holder**
Code: **M001**



Product: **Cutwork lamp**
Code: **M002**



Product: **Dhoop (incense) burner**
Code: **M003**



Product: **Hanging lamp**
Code: **M004**



Product: **Kumkum holder large**
Code: **M005**



Product: **Kumkum holder small**
Code: **M006**



Product: **Table top lamp**
Code: **M007**

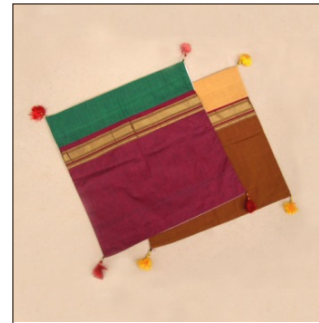
The art of metal casting in India is as old as the Indus Valley civilisation. In Maharashtra, brass and alloy cast artefacts are made by both the lost wax process and the sand casting process. The product forms are adapted to incorporate stylised religious, animal, bird and floral representations of the region.



Product: **Batwa**
Code: **F001**



Product: **Bags - rectangular**
Code: **F002**



Product: **Cushion covers**
Code: **F003**



Product: **Bags - round**
Code: **F004**



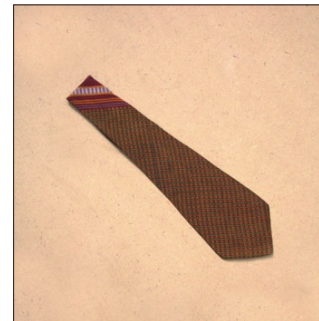
Product: **Sling pouch with flap**
Code: **F005**



Product: **Gift envelopes**
Code: **F006**



Product: **Sling pouch with pockets**
Code: **F007**



Product: **Tie**
Code: **F008**



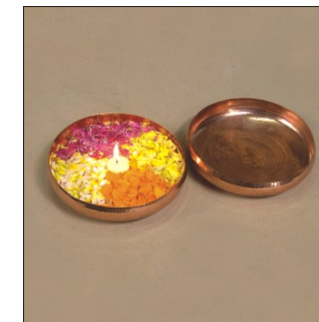
Product: **File folder & note pad**
Code: **F009**

The *khann & irkal* fabric originated in Bhagalpur, Karnataka. This textile later gained acceptance under the royal patronage of Maharashtra. It is woven in a warp of black cotton thread, with patterns in bright contrasting colours from fine silk weft threads. The patterns that emerge are usually geometric with grid-like formations. The coloured silken threads impart a rich sheen. *Khann & irkal* were traditionally dyed in natural vegetable dyes like *haldi*, *kattha* and colours extracted from the *daudi* flower.

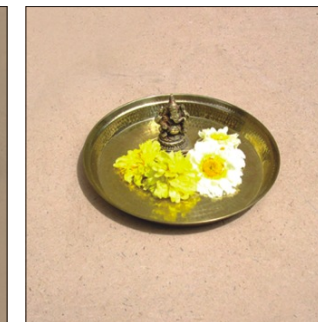
Fabric - Khann & Irkal products



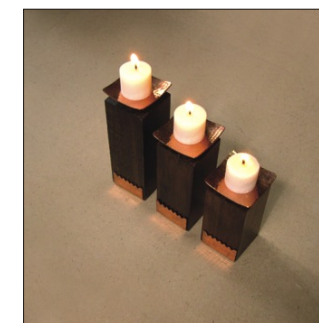
Metalware - Copper & brass with wood



Product: **Urli**
Code: **C001**



Product: **Pooja thali**
Code: **C002**



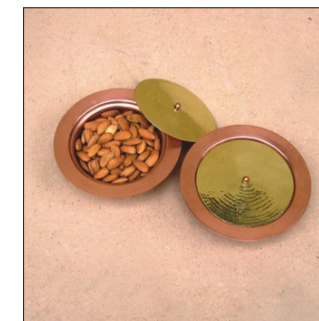
Product: **Candle holders - square**
Code: **C003**



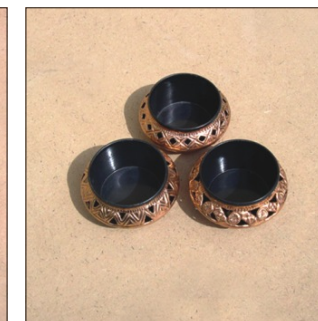
Product: **Candle holders - round**
Code: **C004**



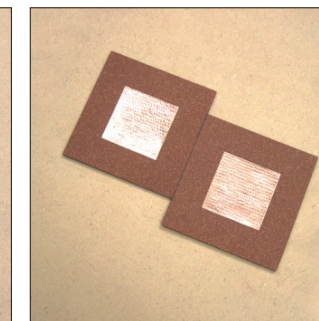
Product: **Trinket box**
Code: **C005**



Product: **Snack server**
Code: **C006**



Product: **Cutwork snack server**
Code: **C007**



Product: **Hot plate mats**
Code: **C008**

The Tambat community (hereditary workers in copper and brass) migrated to Pune from the Konkan region during the Peshwa reign in the 18th century. The opulence of the Peshwa regime attracted many traders and craftsmen and also their immigration to the town was actively encouraged. The distinctive feature of this craft is its beautiful beaten finish - a manual skill handed down from generation to generation. The beaten finish made by alternately heating and hammering the metal accentuate the form and texture of the Tambat products.